



LOOKBOOK



Seraphin collection sweeps you into a world of timeless luxury inspired by old time traditions and contemporary expression. Like a vintage watch or the craft of artisan accessories, the perfect frame should buck the tides of trends and look stunning, any time, any place. It is a neoclassic addition to your wardrobe that is an extension of you at your best.

Evoking both the warm feeling of Golden Age America and the grand motifs of modern classic Europe, Seraphin adds an unforgettable touch with its made in Japan attention to detail. The signature fleur-de-lis emblem nestled on the temple tip of each frame echoes Seraphin's story and the spirit of the wearer.

Each frame in this collection carries the intrigue of a vintage keepsake with the modern daring of fine design. There's a raw sophistication in the style, the sheer effortlessness of Cary Grant, Gregory Peck, the approachable elegance of Brad Pitt the classic suave of Sinatra, the enduring glamour of Grace Kelly – something quintessentially American with a worldly edge.

More than a decorative embellishment, Seraphin evokes the sturdy sense of a fine accessory, an unspoken weight reflected in the handcrafted finish and careful reverence to hardware details. Timeless colors and textures are coupled with rich new tones and materials to create a modern masterpiece, a distinct pairing of old world tradition and today's boldest trends. From the Clubhouse to the Courthouse to the bustling streets of any city, Seraphin speaks to the polished dresser, the quality conscious, the creative professional with an eye for the authentic.

Iconic. Regal. Singular. Distinctive. Seraphin represents the evolution of exquisite craftsmanship, fine-tuning and good taste. This collection is for those who celebrate the artistry of the past, while looking boldly toward the future.

Seraphin casts a new light on what looks right. The best version of yourself awaits.



TIMELESS  
LUXURY



Style: Duncan







Styles: Sandpiper, Danbury

## CONTEMPORARY EXPRESSION







Styles: Sandpiper, Stauder





Styles: Bassett, Hartford

MADE-IN-JAPAN  
ATTENTION TO  
DETAIL







Style: Hartford Grand



FINE  
DESIGN







Styles: Duncan, Danbury



RAW  
SOPHISTICATION







Styles: Pinehurst, Tifton

SHEER  
EFFORTLESSNESS







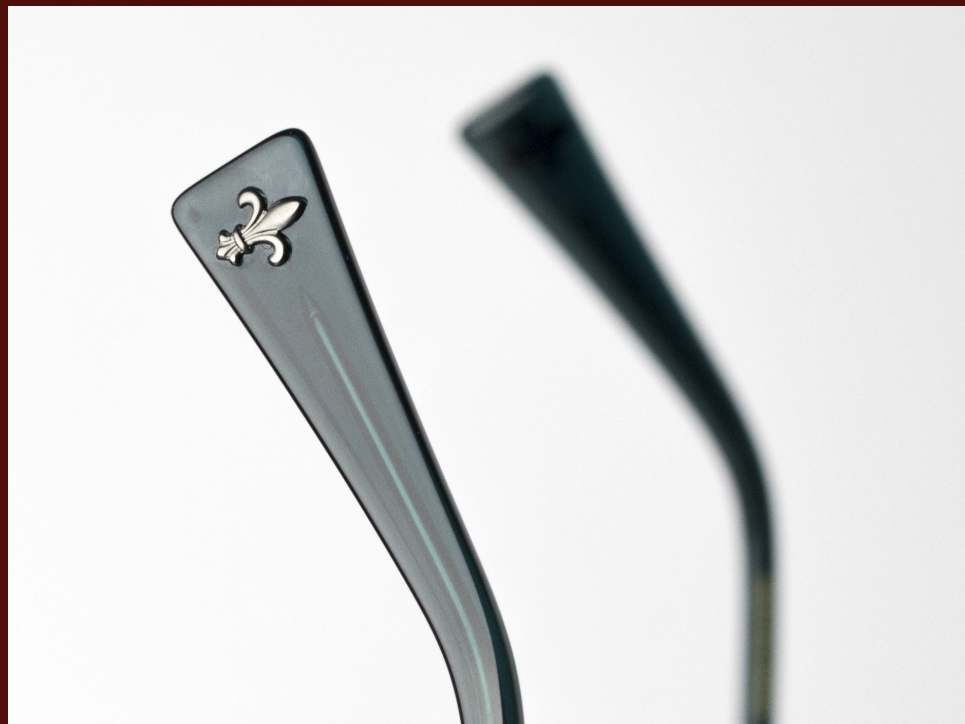
APPROACHABLE  
ELEGANCE



Styles: Sandpiper, Danbury







SIGNATURE  
FLEUR-DE-LIS  
EMBLEM



Style: Hoover







Style: Jonquil







ENDURING  
GLAMOUR



Styles: Tifton, Bello







Styles: Stauder, Alden







28

SERAPHIN



Style: Lantana



HANDCRAFTED  
FINISH



29

SERAPHIN



Styles: Pinehurst, Tifton

## TIMELESS COLORS AND TEXTURES







## RICH NEW TONES AND MATERIALS



Style: Chesapeake







MODERN  
MASTERPIECE



Style: Yates







Styles: Duncan, Belmore



ICONIC.  
REGAL.







Styles: Clifton, Westridge



SINGULAR.  
DISTINCTIVE.







EXQUISITE  
ARTISANSHIP

Styles: Bonnie, Alden







Distributed by OGI Eyewear  
3971 Quebec Avenue North Minneapolis, MN 55427  
888.560.1060 | [info@ogieyewear.com](mailto:info@ogieyewear.com)  
[ogieyewear.com](http://ogieyewear.com)

[@seraphineyewear](#)



[@ogieyewear](#)

